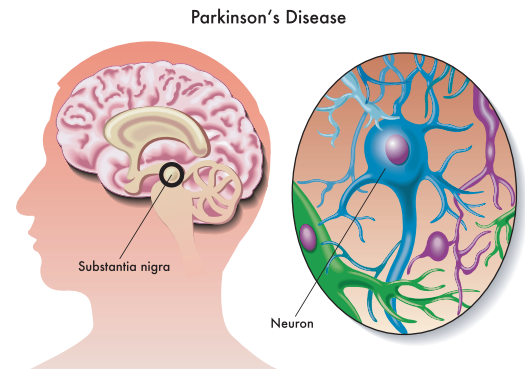


Supporting Parkinson's Clients At Home with Premier Caregiver Services

Which patients would benefit from In-Home Care?

- Patients with a diagnosis of Parkinson's whose progressive disease impacts their ability to complete ADLs
- Patients who struggle to complete self-feeding
- Patients who need supervision
- Patients who are fall risk and safety is a concern.



Services Provided by a In-Home Care Support Caregiver

- ADL Assistance
- Self Feeding or adaptive equipment assistance
- A home exercise program to reduce rigidity and maintain joint mobility
- Home Safety and Supervision
- Transportation coordination
- Medication Reminders

Benefits to Referring to a In-Home Support Caregiver

- Managing the PD disease process at home
- Reducing the need for ER or Urgent Visits due to falls
- Help maintain physical capabilities
- Through compensation techniques, reducing the risk of falls in patients or clients
- Improved communication with providers

**Refer Your Patient Today and Discover How Home Care Can
Help Your Patient Achieve their Goals!**

502-718-8727